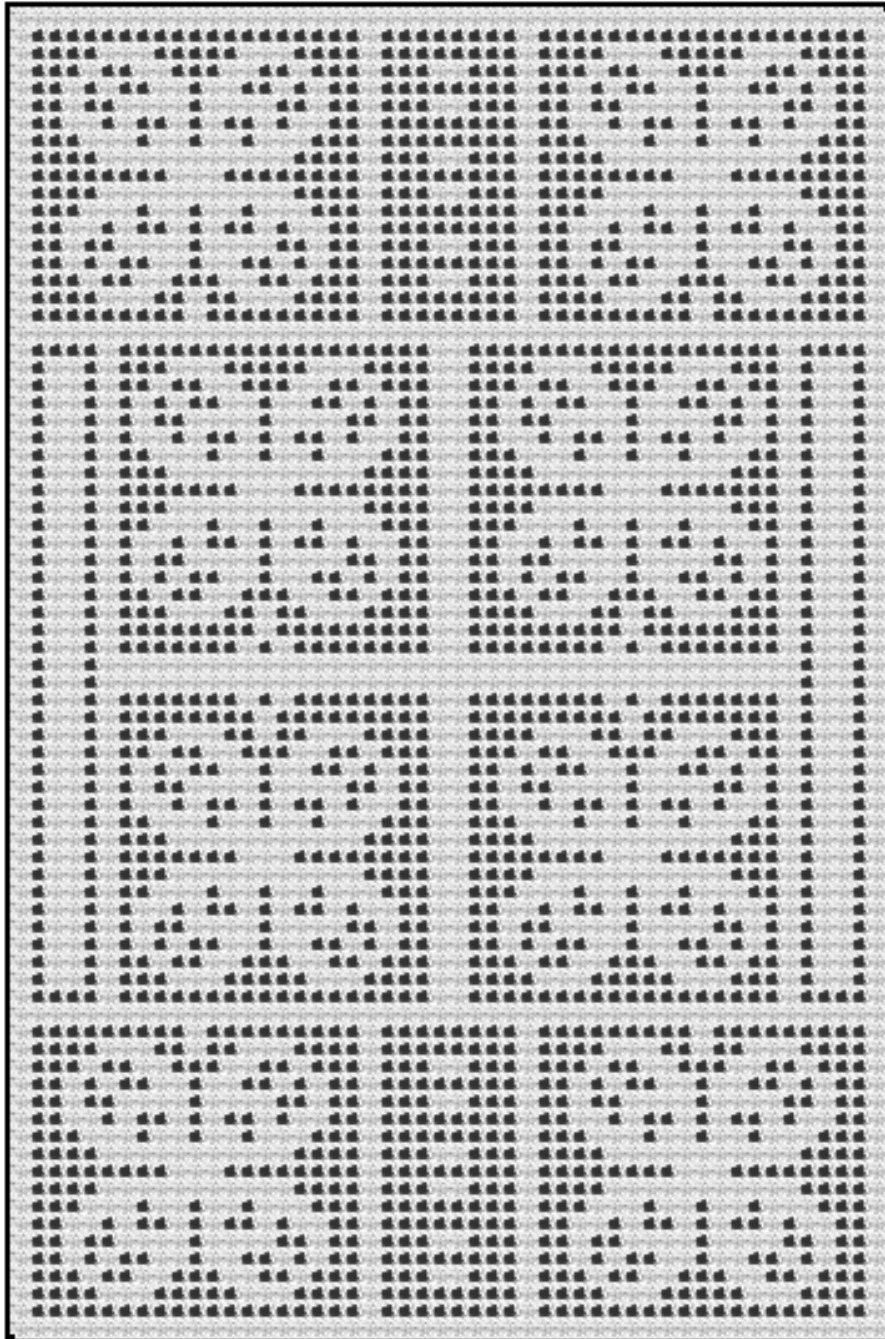
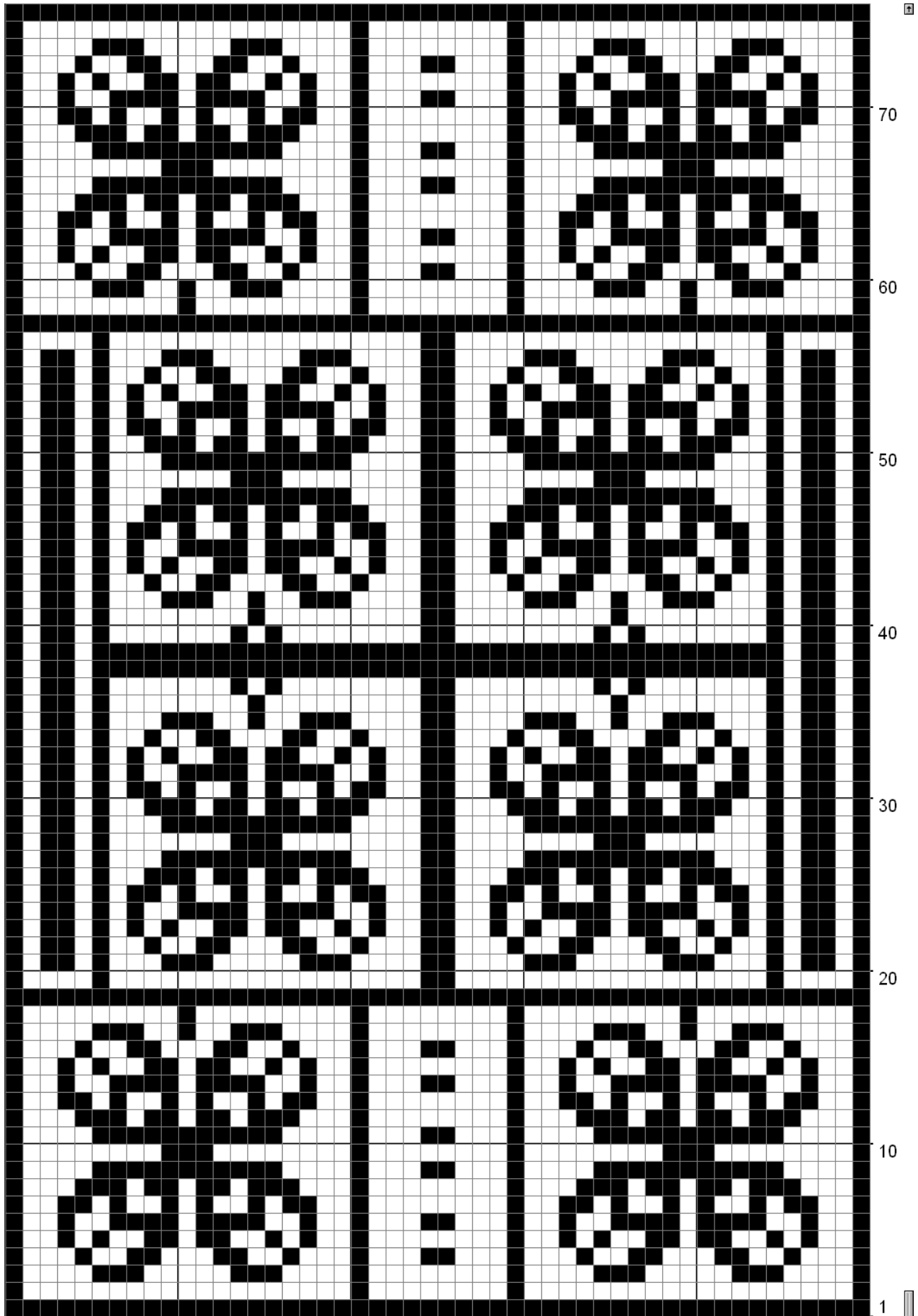


FLOWER PETALS



COPYRIGHT TINA GIBBONS NOT FOR RESALE OR REDISTRIBUTION



70

60

50

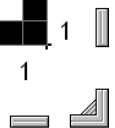
40

30

20

10

1





FOR MY BEST DEALS, Visit my web Store:

<http://superlativestitchery.com> Designing crochet patterns, hundreds of gorgeous original designs that are fun to make at affordable prices. A FUN AND INTERESTING WAY TO MAKE PICTURE AFGHANS, ONCE YOU LEARN IT YOU WILL BE ADDICTED!

If you are having problems with generic file instructions, try this instead.....

For COLOR GRAPH patterns, the instructions can be made more simple as such:

Chain as many as the instructions say, (for examples sake, chain 340), chain 3 to turn, (this counts as 1st double crochet), double crochet in 5th chain from hook, (2nd double crochet), then double crochet in next two chains(3rd and 4th double crochet), this completes first square in first row, double crochet in every following chain, til end of row, following colors. Chain 3 to turn, (this counts as 1st double crochet), double crochet in 5th chain from hook, (2nd double crochet), then double crochet in next two chains(3rd and 4th double crochet), this completes first square in second row, double crochet in every following chain, til end of row, following colors. Continue following this pattern for as many rows as the pattern states, you will have 340 double crochets in each row. The first square in each row counts as 4 double crochets, and the rest count as 3 double crochets, this will help in counting when needing to change colors.

FOR BLACK AND WHITE GRAPHS:

Chain as many as stated,(for examples sake, chain 340), chain 3 to turn, (this counts as 1st double crochet), double crochet in 5th chain from hook, (2nd double crochet), then double crochet in next two chains(3rd and 4th double crochet), this completes first square in first row.

IF THE SECOND SQUARE IS OPEN then it counts as chain 2 then double crochet. Each following open square counts as chain 2 then double crochet. When you reach a solid square it counts as 3 double crochet, and the next square counts as chain 2 then double crochet for open square OR 3 double crochet for solid square.

IF THE SECOND SQUARE IS SOLID then it counts as 3 double crochet. Each following solid square counts 3 double crochet. When you reach an open square it counts as chain 2 then double crochet, and the next square counts as chain 2 then double crochet for open square OR 3 double crochet for solid square.

You should have 340 chains when finished in every row.

You can also use my graph patterns with single, ½ double or double crochet by substituting one color for white and one color for black, or be as creative as you want, use as many colors as you want to fill in the spaces on the graph, count each square as 2 crochet stitches, so to begin you will chain the number of squares in the first row X 2. If there are 60 squares you will chain 120. Follow each row of the graph from right to left, turn, and then do the same exact row left to right. Then do the next row right to left (and then left to right), following the graph to change colors when appropriate. To make it smaller, count each square as one stitch. To make it larger you can count each square as 3 stitches, do each row 4 times, or both. There are so many ways to be creative with my graph patterns. Just be sure to adjust your beginning chain to reflect your change. Chain as many squares there are in the first row x the number of stitches you count each square as.

Need more help? Email me @ tinagibbons@superlativestitchery.com

FLOWER PETALS

Web site: <http://superlativestitchery.com>

Copyright: Tina Gibbons

INSTRUCTIONS:

Starting at bottom of pattern chain 151. Chain 3 to turn which will count as first double crochet of first row. Double crochet in 5th chain from hook. Double crochet in next 2 chains to complete bottom right solid square of pattern. Continue following pattern for first row reading pattern right to left. After completing first row, chain 3 to turn to start next row. Continue following pattern until all rows are complete. At end of row 76 fasten off. (See "HOW TO READ PATTERN" below) For how to increase or decrease select Advance Instructions under Page menu.

MATERIALS (based on crochet cotton size):

Using Worsted Weight: about 1254 yds, steel crochet hook US size I or SIZE FOR GAUGE.

APPROXIMATE FINISHED SIZES:

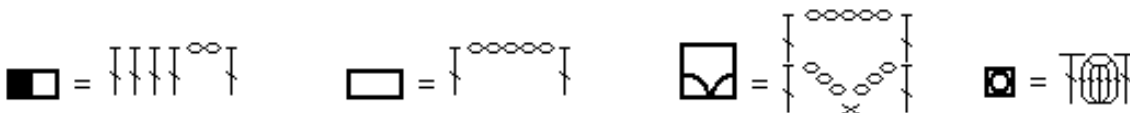
Using Worsted Weight: width = 45.5 inches, height = 70.7 inches

GAUGE:

Using Worsted Weight: 10 squares = 9.1 inches, 10 rows = 9.3 inches

HOW TO READ PATTERN:

Each solid square is equal to 4 double crochets. Each open square is equal to 1 double crochet, followed by 2 chains, followed by 1 double crochet. The double crochet at the end of each square also counts as the first double crochet of the next square. For example, a solid square followed by an open square is 4 double crochets, 2 chains, 1 double crochet. See diagram below:



Where "}" is the symbol for one double crochet, "o" is the symbol for one chain, and "x" is the symbol for one single crochet.

I AM ALLOWING YOU TO PRINT THIS PATTERN FOR YOUR OWN PERSONAL USE, IT IS PROTECTED BY COPYRIGHT LAW AND IS NOT TO BE SOLD OR DISTRIBUTED. IF YOU WOULD LIKE TO SHARE IT WITH SOMEONE, PLEASE REFER THEM TO THIS WEBSITE. THANK YOU.